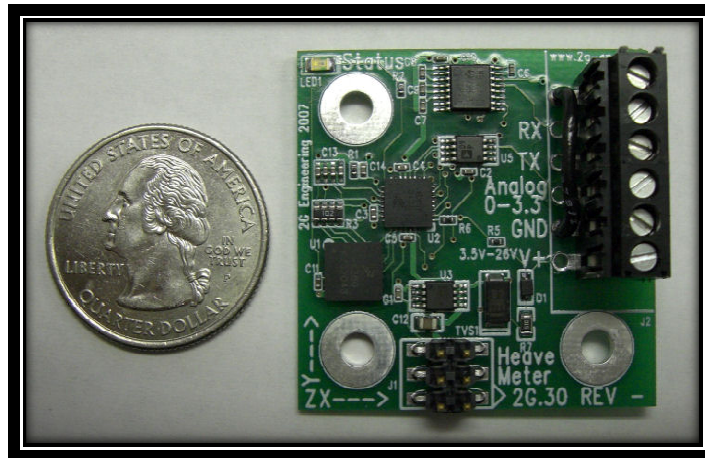
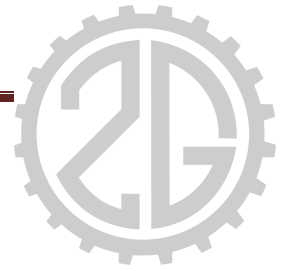








Heaveometer



2G Engineering's new heaveometer **measures** the periodic vertical displacement, or **heave motion**, of whatever it is mounted to. Use it to measure the sea state on deck, and use it to measure motion of payloads hanging from the crane and in the water.

The 2G **Heaveometer** will measure how much your SubSea deployments are moving due to wave action on the surface, and let you make the call when conditions are too bad, **before you damage** your equipment.

FEATURES:

-  **Measures Periodic Heave Motions**
-  **Advanced Proprietary Heave Sensing Algorithm**
-  **Mount at any orientation**
-  **Small size and low power consumption**

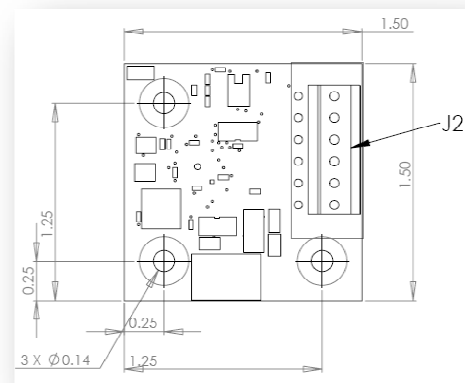
SPECIFICATIONS:

Electrical:

Input Voltage:	5-30V DC
Current Draw:	14mA
Analog Output:	1V = 10 ft of heave
RS-232 Output:	9600 Baud, 8-N-1

Mechanical:

Acceleration Sensitivity:	0.25 ft/s ² (0.0078 g)
Periodic Sensitivity:	2s to 25s
Min Detectable Heave Motions:	<1/2" at 2s, 4 ft at 25s period



2G Engineering
2870 Terra Court Suite 3 • Sun Prairie, WI 53590 USA
Phone: 608-628-8941 • Fax: 608.825.4789
www.2g-eng.com • info@2g-eng.com