

6100 SERIES SUBSEA ROTARY ACTUATOR

GENERAL SPECIFICATIONS:

- OUTPUT TORQUE: UP TO 2000 FT-LB PEAK(T6 FRAME SIZE)
- OUTPUT SPEED: UP TO 2500 RPM NO-LOAD (T1 FRAME SIZE)
- OUTPUT POWER:
 - UP TO 1.5 KW PEAK AT 48V
 - UP TO 6.0 KW PEAK AT VOLTAGES UP TO 800V^[1]
- INTEGRATED SERVO CONTROL AND MOTOR DRIVER
- INTERNAL PRESSURE COMPENSATOR
- OPTIONAL SPRING-ENGAGED, POWER-OFF BRAKE
- LED SHAFT POSITION INDICATOR RING
- STANDARD CONNECTORS:
 - 9-PIN LOW-PROFILE POWER CONNECTOR
 - 13-PIN LOW-PROFILE COMMS CONNECTOR
- COMMUNICATION PHYSICAL LAYER OPTIONS: RS-232, RS-485, CAN, ETHERNET, ANALOG VOLTAGE CONTROL, AND ANALOG CURRENT CONTROL

OPERATING ENVIRONMENT:

- DESIGNED FOR MISSION-CRITICAL SUBSEA USE
- PRESSURE-BALANCED OIL-FILLED HOUSING
- CORROSION RESISTANT HOUSING MATERIAL OPTIONS
 - STAINLESS STEEL, PASSIVATED
 - ALUMINUM, HARDCOAT ANODIZED
 - TITANIUM
- OPERATIONAL DEPTH RATING: >6000 METERS SEAWATER
- DESIGN PRESSURE: 10,000 psi
- OPERATING TEMPERATURE RANGE: -20°C TO 65°C
- STORAGE TEMPERATURE RANGE: -30°C TO 85°C
- OPERATING VOLTAGE:
 - 48VDC STANDARD (12-55VDC RANGE)
 - UP TO 800V AVAILABLE. CONTACT 2G.^[1]

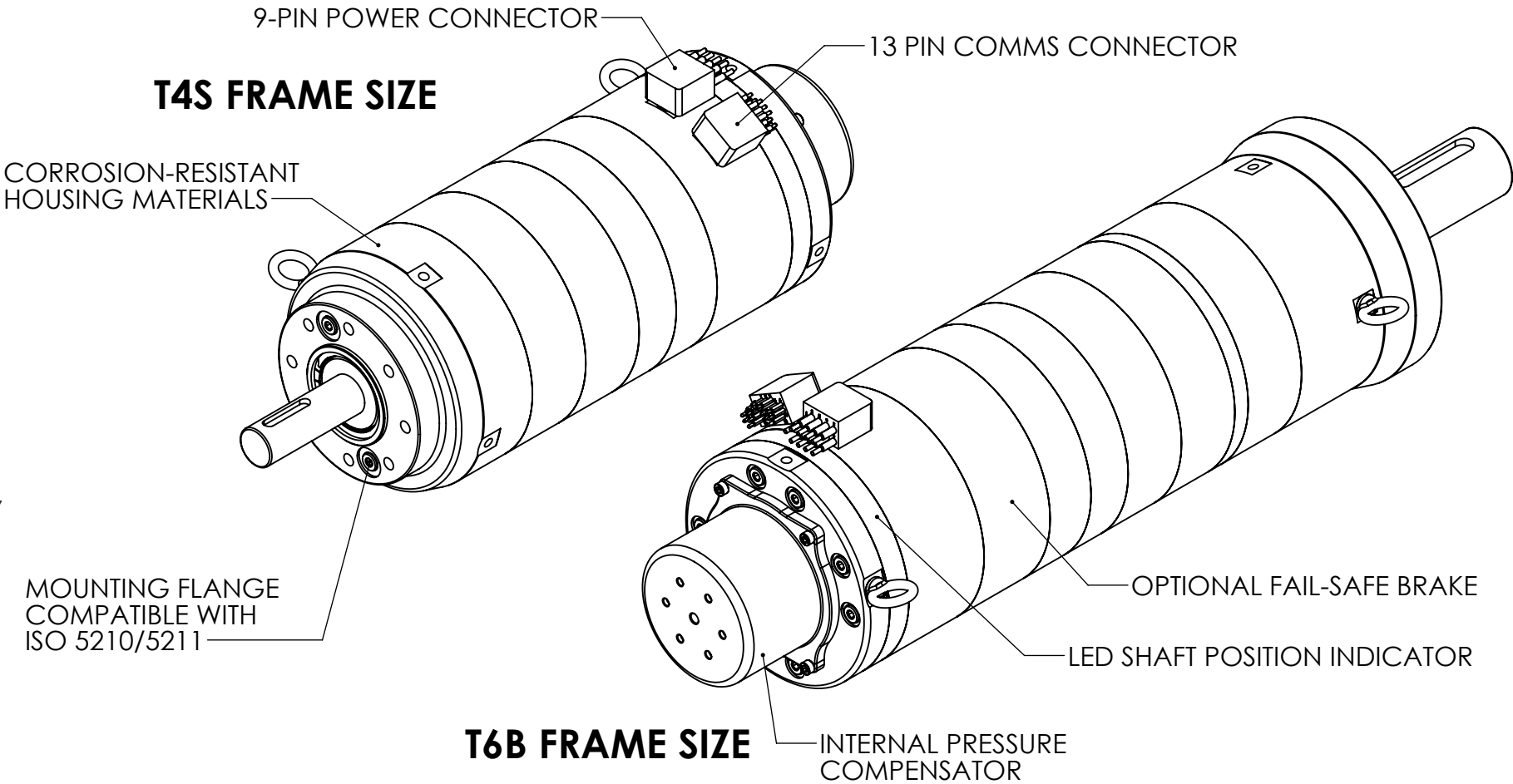
ONBOARD MOTOR DRIVER AND SERVO SYSTEM:

- CLOSED-LOOP POSITION CONTROL WITH PID TUNING
- CONFIGURABLE LIMITS FOR CURRENT, POWER, VELOCITY, AND ACCELERATION
- CONFIGURABLE MOTION PROFILE GENERATOR
- CONTACTLESS NON-WEARING ABSOLUTE POSITION SENSOR
- DOES NOT REQUIRE HOMING
- 0.002° RESOLUTION, 0.2° PRECISION, 1° ACCURACY
- COMMS PROTOCOL: MODBUS & 2G PACKETS
- DEFAULT BAUD RATE: 115200

2G ENGINEERING CAN CUSTOMIZE ANY ACTUATOR TO SUIT YOUR APPLICATION. CERTAIN OPTIONS MAY IMPACT DIMENSIONS, PERFORMANCE, AND LEAD TIME. CONTACT 2G TO CONFIRM SPECIFICATIONS FOR YOUR APPLICATION.

[1] DIMENSIONS & PERFORMANCE OF HIGH-VOLTAGE UNITS MAY DIFFER FROM STANDARD 48V UNITS. CONTACT 2G FOR DETAILS.

T4S FRAME SIZE



T6B FRAME SIZE

RATED TORQUE (48VDC)			
FRAME SIZE	CONTINUOUS	INTERMITTENT	PEAK
-	ft-lbf [Nm]	ft-lbf [Nm]	ft-lbf [Nm]
T1	3.0 [4.1]	4.5 [6.1]	6.0 [8.1]
T2	25 [34]	35 [47]	45 [61]
T3	150 [203]	200 [271]	250 [339]
T4	300 [407]	400 [542]	500 [678]
T5	600 [813]	800 [1085]	1000 [1356]
T6	1200 [1627]	1600 [2169]	2000 [2712]

MATERIAL:
-

MATERIAL COMMENTS:

FINISH:

UNLESS OTHERWISE SPECIFIED:
- DIMENSIONS ARE IN INCHES
- DIMENSIONS IN [] ARE IN mm
- TOLERANCES:
DECIMALS:
.X ±.05
.XX ±.015
.XXX ±.005
ANGULAR:
MACHINED: ±0.5°
OTHER: ±2°
- THREAD DEPTHS ON TAPPED HOLES ARE MINIMUMS
- TAP DRILL DIAMETERS ARE REFERENCE
- MAX FILLET RADIUS ON INSIDE SHARP CORNERS: 0.005
- BREAK ALL SHARP EDGES 0.010 MAX AND REMOVE BURRS
- SURFACE FINISH: ≤63 Ra (µin)

INITIALS
DATE

DRAWN
DJF
04/03/2025

APPROVED
DJF
04/03/2025

PROPRIETARY AND CONFIDENTIAL
THE INFORMATION CONTAINED IN THIS DRAWING IS THE SOLE PROPERTY OF 2G ENGINEERING. ANY DISTRIBUTION OR REPRODUCTION IN PART OR AS A WHOLE WITHOUT THE WRITTEN PERMISSION OF 2G ENGINEERING IS PROHIBITED.

SIZE
B

THIRD ANGLE
PROJECTION

DWG. NO.
6100R

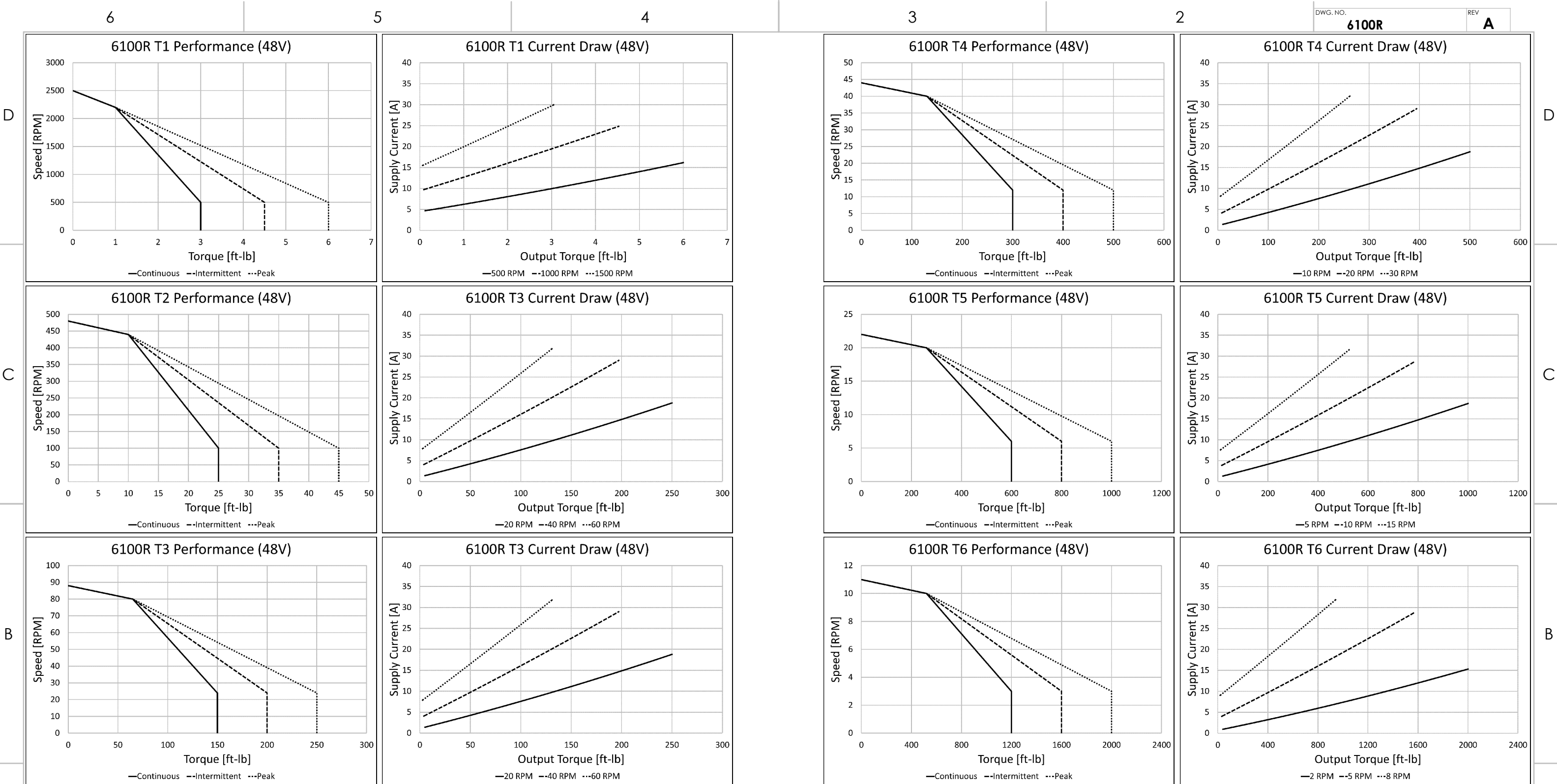
SCALE: 1:4

REV.
A

SHEET 1 OF 10

2G ENGINEERING
WWW.2G-ENG.COM
608-825-4799

TITLE: 6100 SERIES ROTARY ACTUATOR



ALL CHARTS SHOW PERFORMANCE AT 48VDC. CONTACT 2G FOR OPERATION AT OTHER VOLTAGES.

MAXIMUM SHAFT LOADS							
FRAME SIZE	UNITS	T1	T2	T3	T4	T5	T6
MAXIMUM AXIAL LOAD	lb [kg]	300 [136]	1900 [862]	1900 [862]	1900 [862]	1900 [862]	1900 [862]
MAXIMUM RADIAL LOAD, SHAFT SUPPORTED AT END	lb [kg]	600 [272]	3900 [1769]	3900 [1769]	3900 [1769]	3900 [1769]	3900 [1769]
MAXIMUM RADIAL LOAD, SHAFT CANTILEVERED (LOAD APPLIED AT END OF SHAFT, SPECIFIED DISTANCE FROM MOUNTING FACE)	lb [kg]	300 [136]	1000 [454]	1000 [454]	1200 [544]	1400 [635]	1500 [680]
	in [mm]	2.76 [70]	2.76 [70]	2.76 [70]	3.31 [84]	4.02 [102]	5.04 [128]

MATERIAL:
-

MATERIAL COMMENTS:

FINISH:

UNLESS OTHERWISE SPECIFIED:
- DIMENSIONS ARE IN INCHES
- DIMENSIONS IN [] ARE IN mm
- TOLERANCES:
DECIMALS:
.X ±.05
.XX ±.015
.XXX ±.005
ANGULAR:
MACHINED: ±0.5°
OTHER: ±2°
- THREAD DEPTHS ON TAPPED HOLES ARE MINIMUMS
- TAP DRILL DIAMETERS ARE REFERENCE
- MAX FILLET RADIUS ON INSIDE SHARP CORNERS: 0.005
- BREAK ALL SHARP EDGES 0.010 MAX AND REMOVE BURRS
- SURFACE FINISH: ≤63 Ra (µin)

	INITIALS	DATE
DRAWN	DJF	04/03/2025
APPROVED	DJF	04/03/2025

PROPRIETARY AND CONFIDENTIAL
THE INFORMATION CONTAINED IN THIS DRAWING IS THE SOLE PROPERTY OF 2G ENGINEERING. ANY DISTRIBUTION OR REPRODUCTION IN PART OR AS A WHOLE WITHOUT THE WRITTEN PERMISSION OF 2G ENGINEERING IS PROHIBITED.

SIZE BTHIRD ANGLE PROJECTION

INTERPRET GEOMETRIC DIMENSIONING & TOLERANCING PER ASME Y14.5-2009

2G ENGINEERING

WWW.2G-ENG.COM

608-825-4799

TITLE: 6100 SERIES ROTARY ACTUATOR

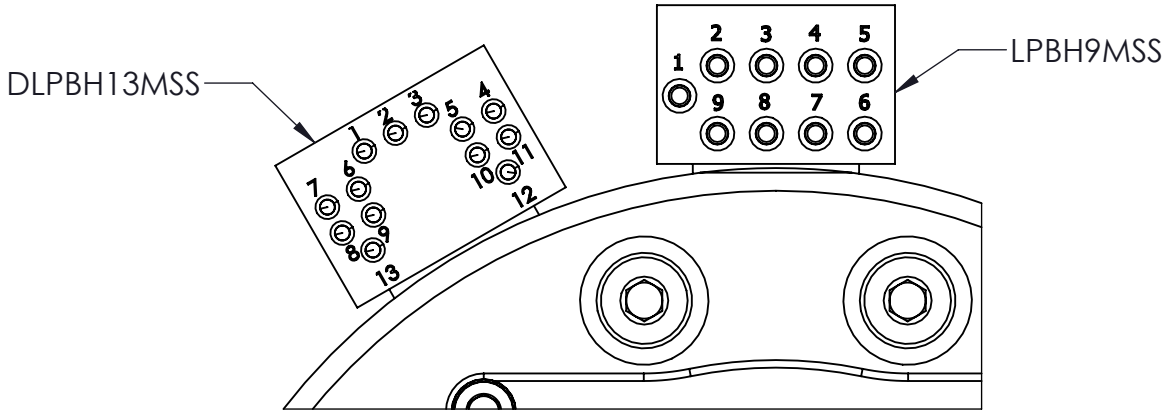
DWG. NO. 6100R

SCALE: 1:4

SHEET 2 OF 10

REV. A

SERIES		FRAME SIZE		BRAKE ^[1]		-	HOUSING MATERIAL		OUTPUT SHAFT [SEE TABLE]		-	COMMUNICATION		VOLTAGE ^[2]	
6100R	SUBSEA	T1	F07 FLANGE DIRECT DRIVE	S	WITHOUT BRAKE		SS	STAINLESS STEEL	KA0070	T1, T2, T3 STANDARD		13S	RS-232, RS-485, ETHERNET, ANALOG VOLTAGE & CURRENT	01	48 VDC NOMINAL, 12-55 VDC RANGE
		T2	F07 FLANGE SINGLE STAGE	B	WITH BRAKE		AL	ANODIZED ALUMINUM	KB0084	T4 STANDARD				12	300 VDC NOMINAL, 100-450 VDC RANGE
		T3	F07 FLANGE STANDARD				TI	TITANIUM	KC0102	T5 STANDARD					
		T4	F10 FLANGE STANDARD						KD0128	T6 STANDARD					
		T5	F12 FLANGE STANDARD												
		T6	F14 FLANGE STANDARD												



PIN ASSIGNMENTS 13 PIN COMMS CONNECTOR MACARTNEY SUBCONN DLPBH13MSS	
PIN	13S
1	ANALOG INPUT
2	COMMS GND
3	ANALOG OUTPUT
4	RS-232 TX
5	RS-232 RX
6	RS-485 + (CAN HI) ^[3]
7	RS-485 - (CAN LO) ^[3]
8	ETHERNET TX+
9	ETHERNET TX-
10	ETHERNET RX+
11	ETHERNET RX-
12	COMMS SHIELD
13	COMMS SHIELD

PIN ASSIGNMENTS 9 PIN POWER CONNECTOR MACARTNEY SUBCONN LPBH9MSS	
PIN	ALL CONFIGURATIONS
1	CHASSIS GROUND
2	VIN -
3	VIN -
4	VIN -
5	VIN -
6	VIN +
7	VIN +
8	VIN +
9	VIN +

STANDARD SHAFT DIMENSIONS				
SIZE	CODE	DIAMETER	LENGTH	KEY WxHxL
T1, T2, T3	KA0070	22mm	70mm	6x6x32
T4	KB0084	28mm	84mm	8x7x40
T5	KC0102	36mm	102mm	10x8x50
T6	KD0128	48mm	128mm	14x9x70

CERTAIN OPTIONS MAY IMPACT DIMENSIONS, PERFORMANCE, OR LEAD TIME.
CONTACT 2G TO CONFIRM SPECIFICATIONS FOR YOUR APPLICATION.

[1] STANDARD UNIT IS "S" OPTION, WITHOUT BRAKE. BRAKE ADDS LENGTH AND WEIGHT. SEE PAGE 10 FOR DETAILS ON BRAKE OPTION.

[2] STANDARD VOLTAGE OPTION IS "01" (48V NOMINAL). OTHER OPTIONS IMPACT DIMENSIONS. CONTACT 2G FOR DETAILS.

[3] SOFTWARE SELECTABLE. DEFAULT SETTING IS RS-485.

MATERIAL:
-

MATERIAL COMMENTS:

FINISH:

UNLESS OTHERWISE SPECIFIED:
- DIMENSIONS ARE IN INCHES
- DIMENSIONS IN [] ARE IN mm
- TOLERANCES:
DECIMALS:
.X ±.05
.XX ±.015
.XXX ±.005
ANGULAR:
MACHINED: ±0.5°
OTHER: ±2°
- THREAD DEPTHS ON TAPPED HOLES ARE MINIMUMS
- TAP DRILL DIAMETERS ARE REFERENCE
- MAX FILLET RADIUS ON INSIDE SHARP CORNERS: 0.005
- BREAK ALL SHARP EDGES 0.010 MAX AND REMOVE BURRS
- SURFACE FINISH: ≤63 Ra (µin)

INITIALS
DATE

DRAWN
DJF
04/03/2025

APPROVED
DJF
04/03/2025

PROPRIETARY AND CONFIDENTIAL
THE INFORMATION CONTAINED IN THIS DRAWING IS THE SOLE PROPERTY OF 2G ENGINEERING. ANY DISTRIBUTION OR REPRODUCTION IN PART OR AS A WHOLE WITHOUT THE WRITTEN PERMISSION OF 2G ENGINEERING IS PROHIBITED.

SIZE
B
THIRD ANGLE
PROJECTION

INTERPRET GEOMETRIC DIMENSIONING & TOLERANCING PER ASME Y14.5-2009

2G ENGINEERING
WWW.2G-ENG.COM
608-825-4799

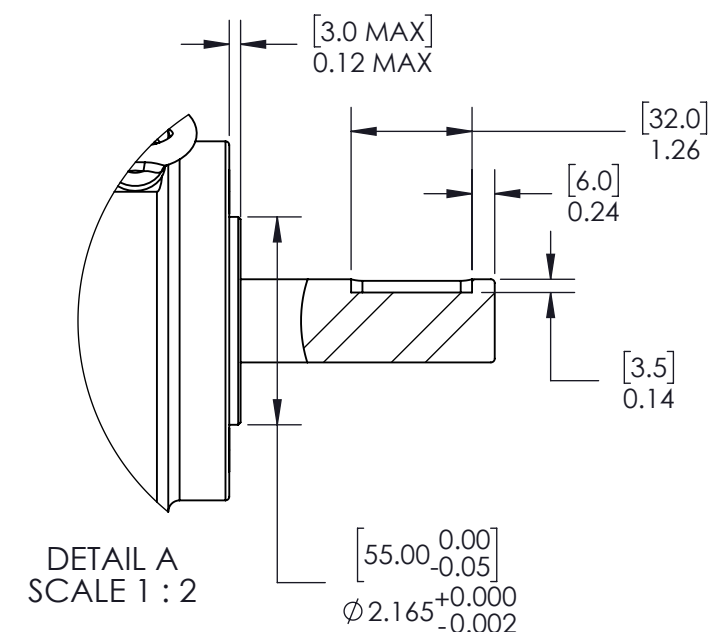
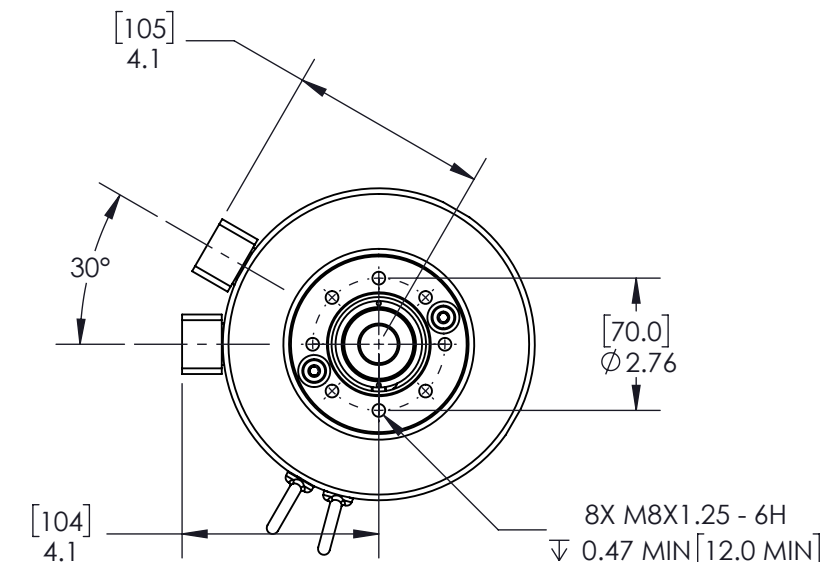
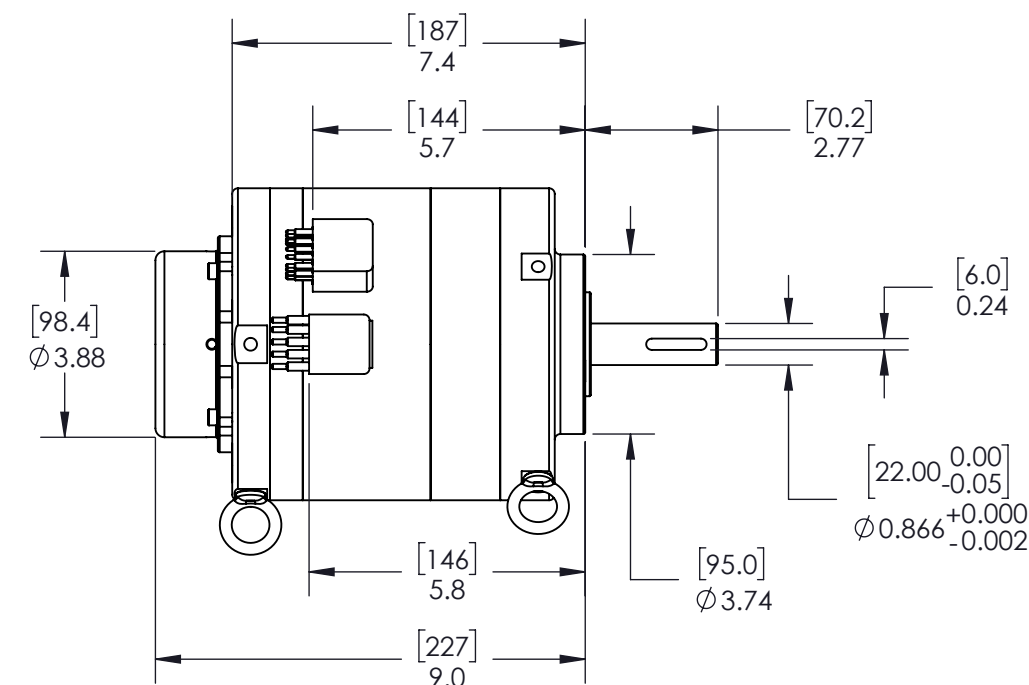
TITLE: 6100 SERIES ROTARY ACTUATOR

DWG. NO.
6100R

REV.
A

SCALE: 1:1

SHEET 3 OF 10





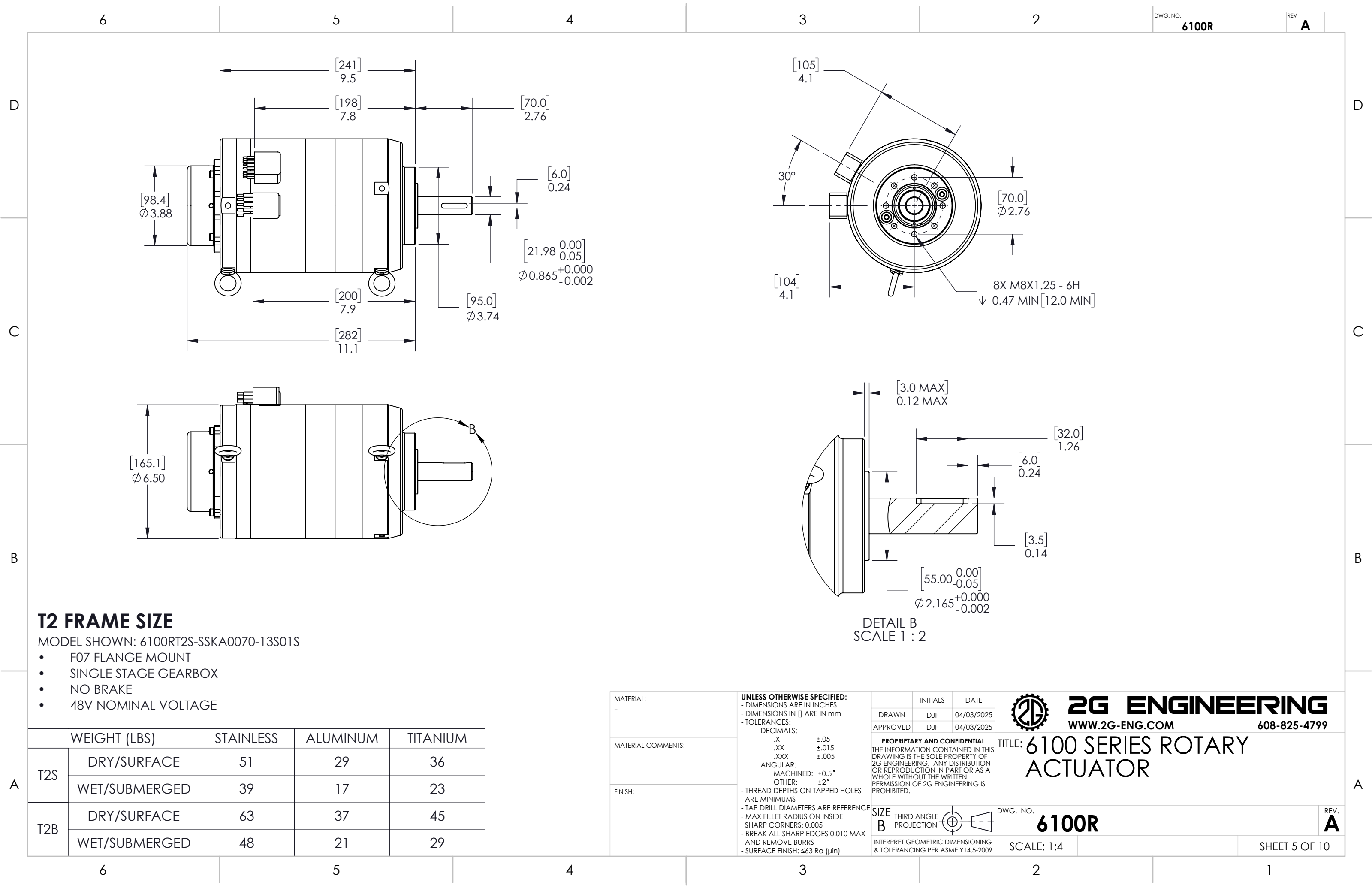
T1 FRAME SIZE

MODEL SHOWN: 6100RT1S-SSKA0070-13S01S

- F07 FLANGE MOUNT
- DIRECT DRIVE
- NO BRAKE
- 48V NOMINAL VOLTAGE

WEIGHT (LBS)		STAINLESS	ALUMINUM	TITANIUM
T1S	DRY/SURFACE	37	19	24
	WET/SUBMERGED	27	10	15
T1B	DRY/SURFACE	49	27	33
	WET/SUBMERGED	36	14	20

MATERIAL: -	UNLESS OTHERWISE SPECIFIED: - DIMENSIONS ARE IN INCHES - DIMENSIONS IN [] ARE IN mm - TOLERANCES: DECIMALS: .X ±.05 .XX ±.015 .XXX ±.005 ANGULAR: MACHINED: ±0.5° OTHER: ±2° - THREAD DEPTHS ON TAPPED HOLES ARE MINIMUMS - TAP DRILL DIAMETERS ARE REFERENCE - MAX FILLET RADIUS ON INSIDE SHARP CORNERS: 0.005 - BREAK ALL SHARP EDGES 0.010 MAX AND REMOVE BURRS - SURFACE FINISH: <63 Ra (µin)	INITIALS DATE DRAWN DJF 04/03/2025 APPROVED DJF 04/03/2025		 <div> 2G ENGINEERING WWW.2G-ENG.COM 608-825-4799 </div>	TITLE: 6100 SERIES ROTARY ACTUATOR
		PROPRIETARY AND CONFIDENTIAL THE INFORMATION CONTAINED IN THIS DRAWING IS THE SOLE PROPERTY OF 2G ENGINEERING. ANY DISTRIBUTION OR REPRODUCTION IN PART OR AS A WHOLE WITHOUT THE WRITTEN PERMISSION OF 2G ENGINEERING IS PROHIBITED.			
MATERIAL COMMENTS:		SIZE B  THIRD ANGLE PROJECTION	DWG. NO. 6100R		REVISION A
FINISH:		INTERPRET GEOMETRIC DIMENSIONING & TOLERANCING PER ASME Y14.5-2009	SCALE: 1:4	SHEET 4 OF 10	


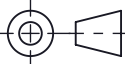


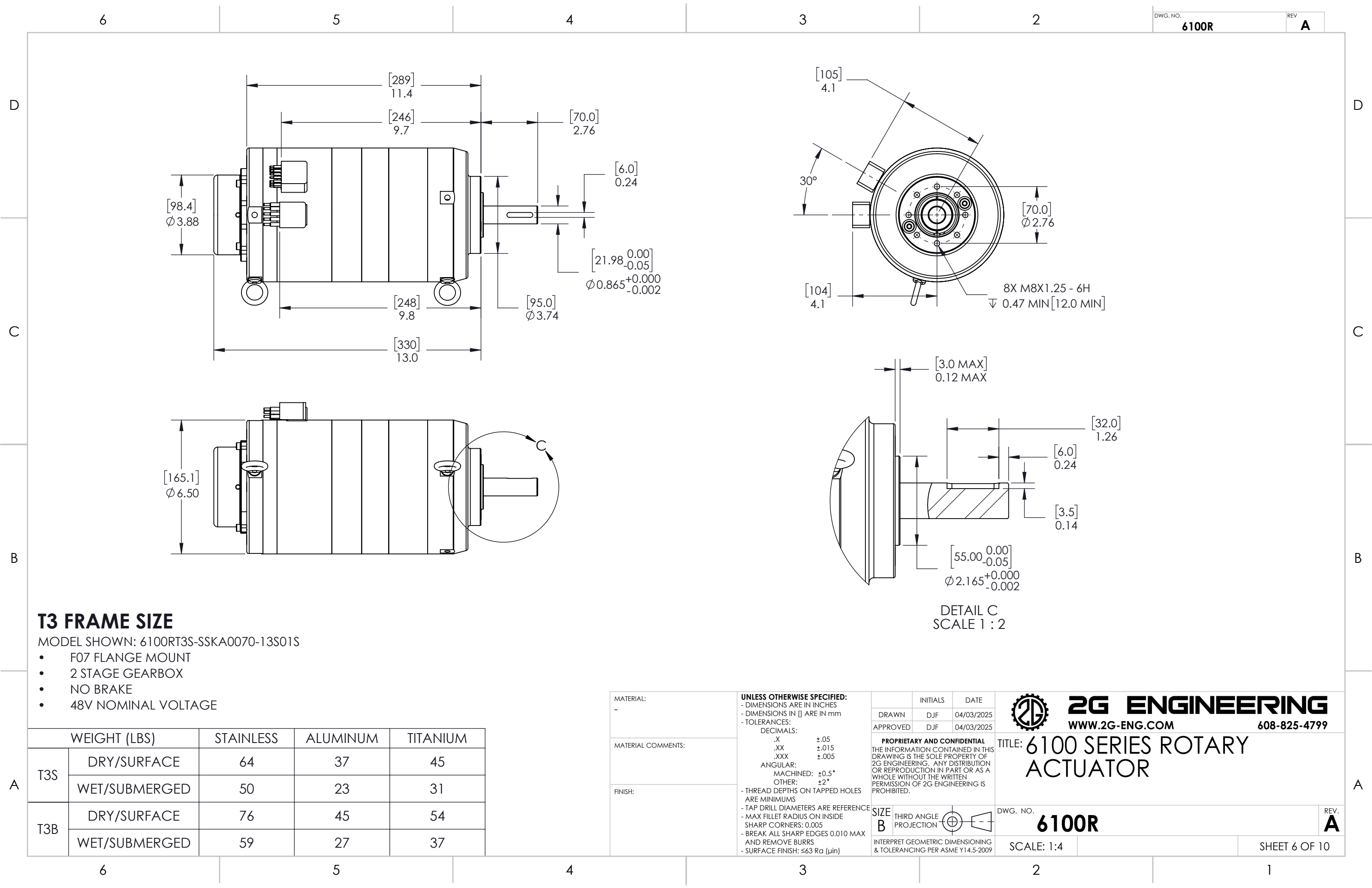
T2 FRAME SIZE

MODEL SHOWN: 6100RT2S-SSKA0070-13S01S

- F07 FLANGE MOUNT
- SINGLE STAGE GEARBOX
- NO BRAKE
- 48V NOMINAL VOLTAGE

WEIGHT (LBS)		STAINLESS	ALUMINUM	TITANIUM
T2S	DRY/SURFACE	51	29	36
	WET/SUBMERGED	39	17	23
T2B	DRY/SURFACE	63	37	45
	WET/SUBMERGED	48	21	29

MATERIAL: -	UNLESS OTHERWISE SPECIFIED: - DIMENSIONS ARE IN INCHES - DIMENSIONS IN [] ARE IN mm - TOLERANCES: DECIMALS: .X ±.05 .XX ±.015 .XXX ±.005 ANGULAR: MACHINED: ±0.5° OTHER: ±2° - THREAD DEPTHS ON TAPPED HOLES ARE MINIMUMS - TAP DRILL DIAMETERS ARE REFERENCE - MAX FILLET RADIUS ON INSIDE SHARP CORNERS: 0.005 - BREAK ALL SHARP EDGES 0.010 MAX AND REMOVE BURRS - SURFACE FINISH: ≤63 Ra (µin)	INITIALS	DATE	 2G ENGINEERING WWW.2G-ENG.COM 608-825-4799	
		DRAWN D.J.F.	04/03/2025		
MATERIAL COMMENTS:	PROPRIETARY AND CONFIDENTIAL THE INFORMATION CONTAINED IN THIS DRAWING IS THE SOLE PROPERTY OF 2G ENGINEERING. ANY DISTRIBUTION OR REPRODUCTION IN PART OR AS A WHOLE WITHOUT THE WRITTEN PERMISSION OF 2G ENGINEERING IS PROHIBITED.	APPROVED D.J.F.	04/03/2025	TITLE: 6100 SERIES ROTARY ACTUATOR	
FINISH:		SIZE B THIRD ANGLE PROJECTION 			
		DWG. NO. 6100R		REV. A	
		SCALE: 1:4		SHEET 5 OF 10	


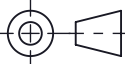


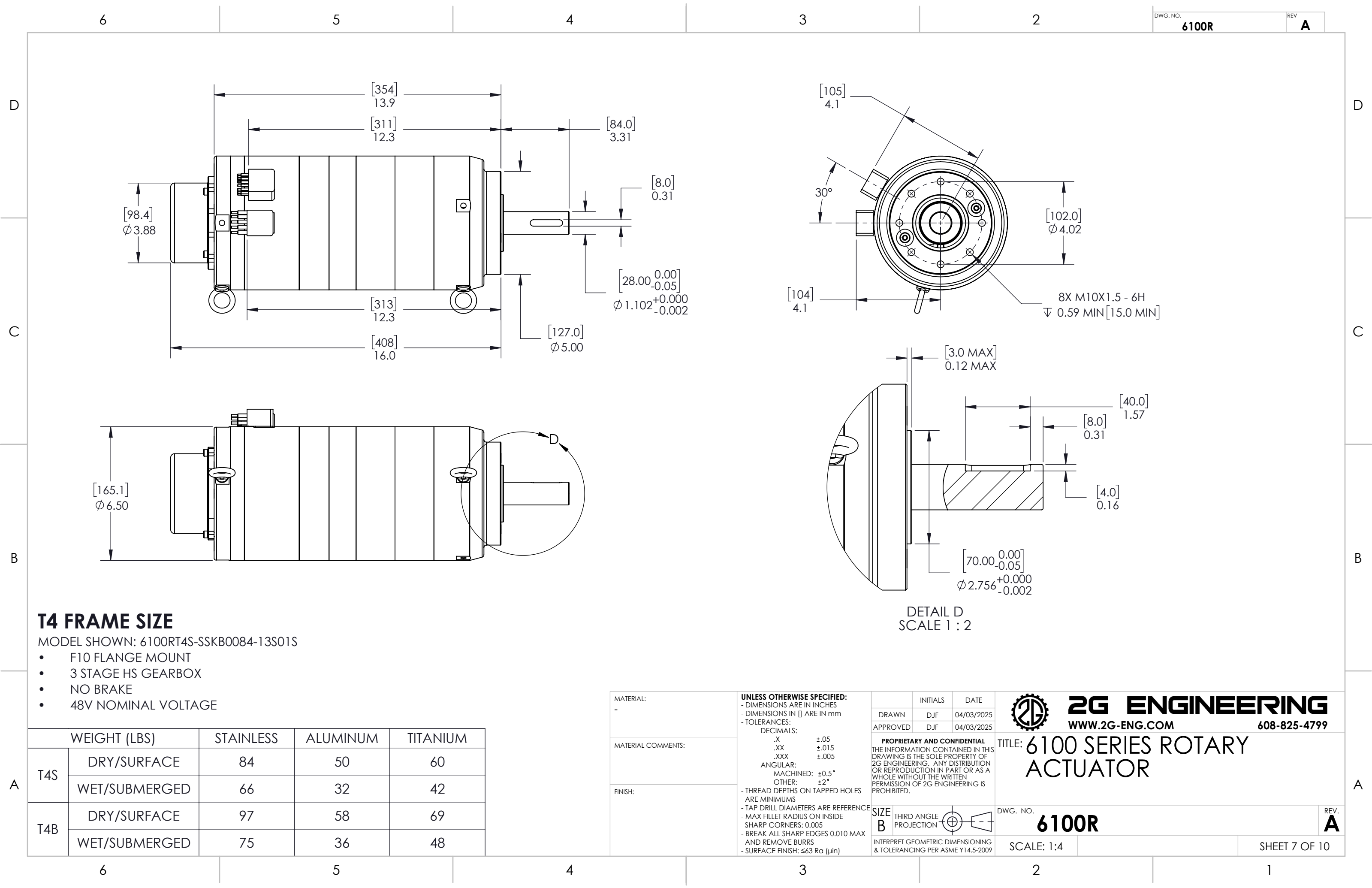
T3 FRAME SIZE

MODEL SHOWN: 6100RT3S-SSKA0070-13S01S

- F07 FLANGE MOUNT
- 2 STAGE GEARBOX
- NO BRAKE
- 48V NOMINAL VOLTAGE

WEIGHT (LBS)		STAINLESS	ALUMINUM	TITANIUM
T3S	DRY/SURFACE	64	37	45
	WET/SUBMERGED	50	23	31
T3B	DRY/SURFACE	76	45	54
	WET/SUBMERGED	59	27	37

MATERIAL: -	UNLESS OTHERWISE SPECIFIED: - DIMENSIONS ARE IN INCHES - DIMENSIONS IN [] ARE IN mm - TOLERANCES: DECIMALS: .X ±.05 .XX ±.015 .XXX ±.005 ANGULAR: MACHINED: ±0.5° OTHER: ±2° - THREAD DEPTHS ON TAPPED HOLES ARE MINIMUMS - TAP DRILL DIAMETERS ARE REFERENCE - MAX FILLET RADIUS ON INSIDE SHARP CORNERS: 0.005 - BREAK ALL SHARP EDGES 0.010 MAX AND REMOVE BURRS - SURFACE FINISH: ≤63 Ra (µin)	INITIALS	DATE	 2G ENGINEERING WWW.2G-ENG.COM 608-825-4799	
		DRAWN DJF	04/03/2025		
MATERIAL COMMENTS:	PROPRIETARY AND CONFIDENTIAL THE INFORMATION CONTAINED IN THIS DRAWING IS THE SOLE PROPERTY OF 2G ENGINEERING. ANY DISTRIBUTION OR REPRODUCTION IN PART OR AS A WHOLE WITHOUT THE WRITTEN PERMISSION OF 2G ENGINEERING IS PROHIBITED.	APPROVED DJF	04/03/2025	TITLE: 6100 SERIES ROTARY ACTUATOR	
FINISH:		SIZE B THIRD ANGLE PROJECTION 			
		DWG. NO. 6100R		REV. A	
		SCALE: 1:4		SHEET 6 OF 10	



T4 FRAME SIZE

MODEL SHOWN: 6100RT4S-SSKB0084-13S01S

- F10 FLANGE MOUNT
- 3 STAGE HS GEARBOX
- NO BRAKE
- 48V NOMINAL VOLTAGE

WEIGHT (LBS)		STAINLESS	ALUMINUM	TITANIUM
T4S	DRY/SURFACE	84	50	60
	WET/SUBMERGED	66	32	42
T4B	DRY/SURFACE	97	58	69
	WET/SUBMERGED	75	36	48

MATERIAL:
-

MATERIAL COMMENTS:

FINISH:

UNLESS OTHERWISE SPECIFIED:
- DIMENSIONS ARE IN INCHES
- DIMENSIONS IN [] ARE IN mm
- TOLERANCES:
DECIMALS:
.X ±.05
.XX ±.015
.XXX ±.005
ANGULAR:
MACHINED: ±0.5°
OTHER: ±2°
- THREAD DEPTHS ON TAPPED HOLES ARE MINIMUMS
- TAP DRILL DIAMETERS ARE REFERENCE
- MAX FILLET RADIUS ON INSIDE SHARP CORNERS: 0.005
- BREAK ALL SHARP EDGES 0.010 MAX AND REMOVE BURRS
- SURFACE FINISH: ≤63 Ra (µin)

INITIALS
DATE

DRAWN
D.J.F.
04/03/2025

APPROVED
D.J.F.
04/03/2025

PROPRIETARY AND CONFIDENTIAL
THE INFORMATION CONTAINED IN THIS DRAWING IS THE SOLE PROPERTY OF 2G ENGINEERING. ANY DISTRIBUTION OR REPRODUCTION IN PART OR AS A WHOLE WITHOUT THE WRITTEN PERMISSION OF 2G ENGINEERING IS PROHIBITED.

SIZE
B

THIRD ANGLE
PROJECTION

DWG. NO.
6100R

SCALE: 1:4

REV.
A

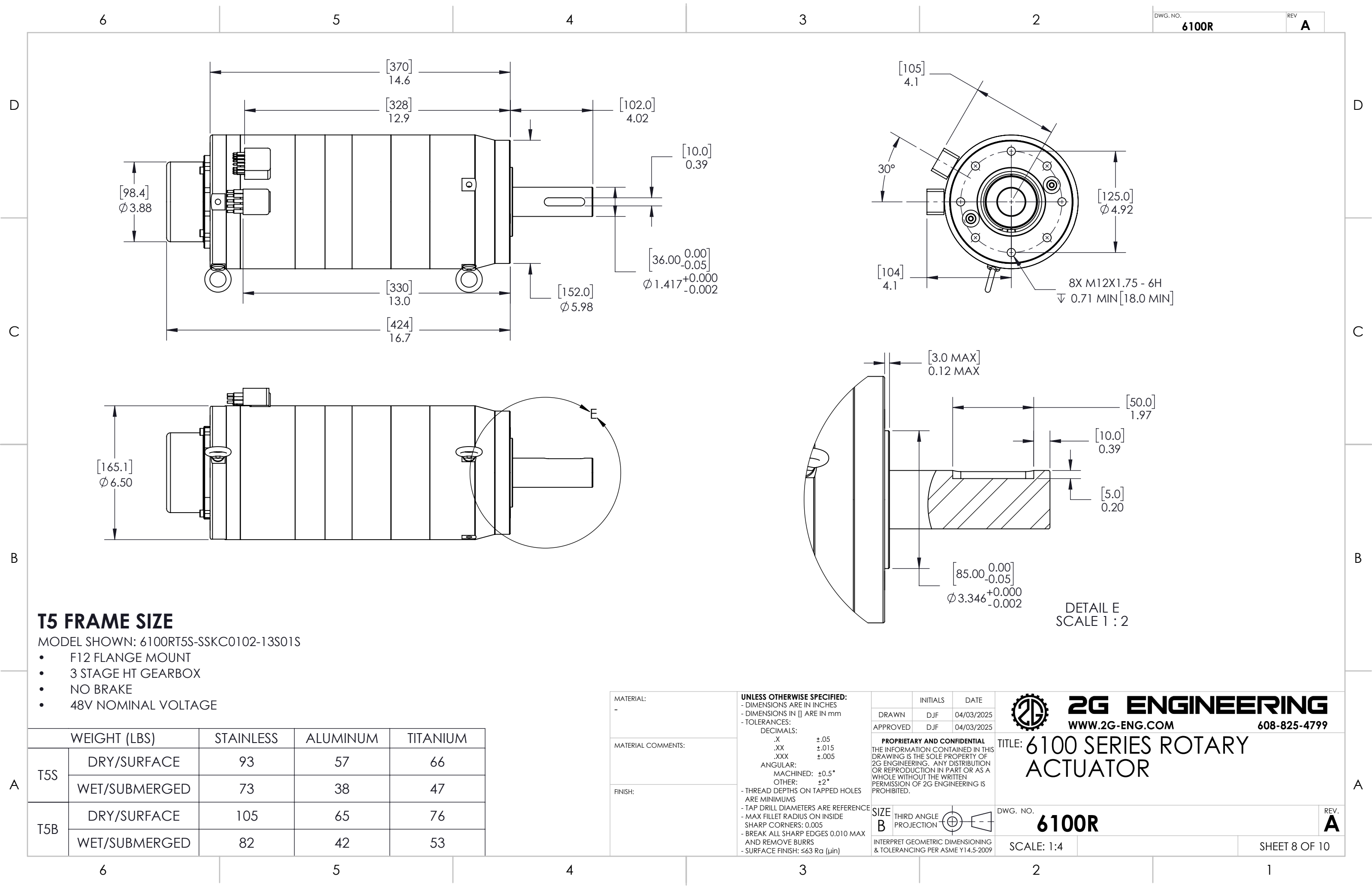
SHEET 7 OF 10

2G ENGINEERING

WWW.2G-ENG.COM

608-825-4799

TITLE: 6100 SERIES ROTARY ACTUATOR



T5 FRAME SIZE

MODEL SHOWN: 6100RT5S-SSKC0102-13S01S

- F12 FLANGE MOUNT
- 3 STAGE HT GEARBOX
- NO BRAKE
- 48V NOMINAL VOLTAGE

WEIGHT (LBS)		STAINLESS	ALUMINUM	TITANIUM
T5S	DRY/SURFACE	93	57	66
	WET/SUBMERGED	73	38	47
T5B	DRY/SURFACE	105	65	76
	WET/SUBMERGED	82	42	53

MATERIAL:
-

MATERIAL COMMENTS:

FINISH:

UNLESS OTHERWISE SPECIFIED:
- DIMENSIONS ARE IN INCHES
- DIMENSIONS IN [] ARE IN mm
- TOLERANCES:
DECIMALS:
.X ±.05
.XX ±.015
.XXX ±.005
ANGULAR:
MACHINED: ±0.5°
OTHER: ±2°
- THREAD DEPTHS ON TAPPED HOLES ARE MINIMUMS
- TAP DRILL DIAMETERS ARE REFERENCE
- MAX FILLET RADIUS ON INSIDE SHARP CORNERS: 0.005
- BREAK ALL SHARP EDGES 0.010 MAX AND REMOVE BURRS
- SURFACE FINISH: ≤63 Ra (µin)

INITIALS
DATE

DRAWN
DJF
04/03/2025

APPROVED
DJF
04/03/2025

PROPRIETARY AND CONFIDENTIAL
THE INFORMATION CONTAINED IN THIS DRAWING IS THE SOLE PROPERTY OF 2G ENGINEERING. ANY DISTRIBUTION OR REPRODUCTION IN PART OR AS A WHOLE WITHOUT THE WRITTEN PERMISSION OF 2G ENGINEERING IS PROHIBITED.

SIZE
B

THIRD ANGLE
PROJECTION

DWG. NO.
6100R

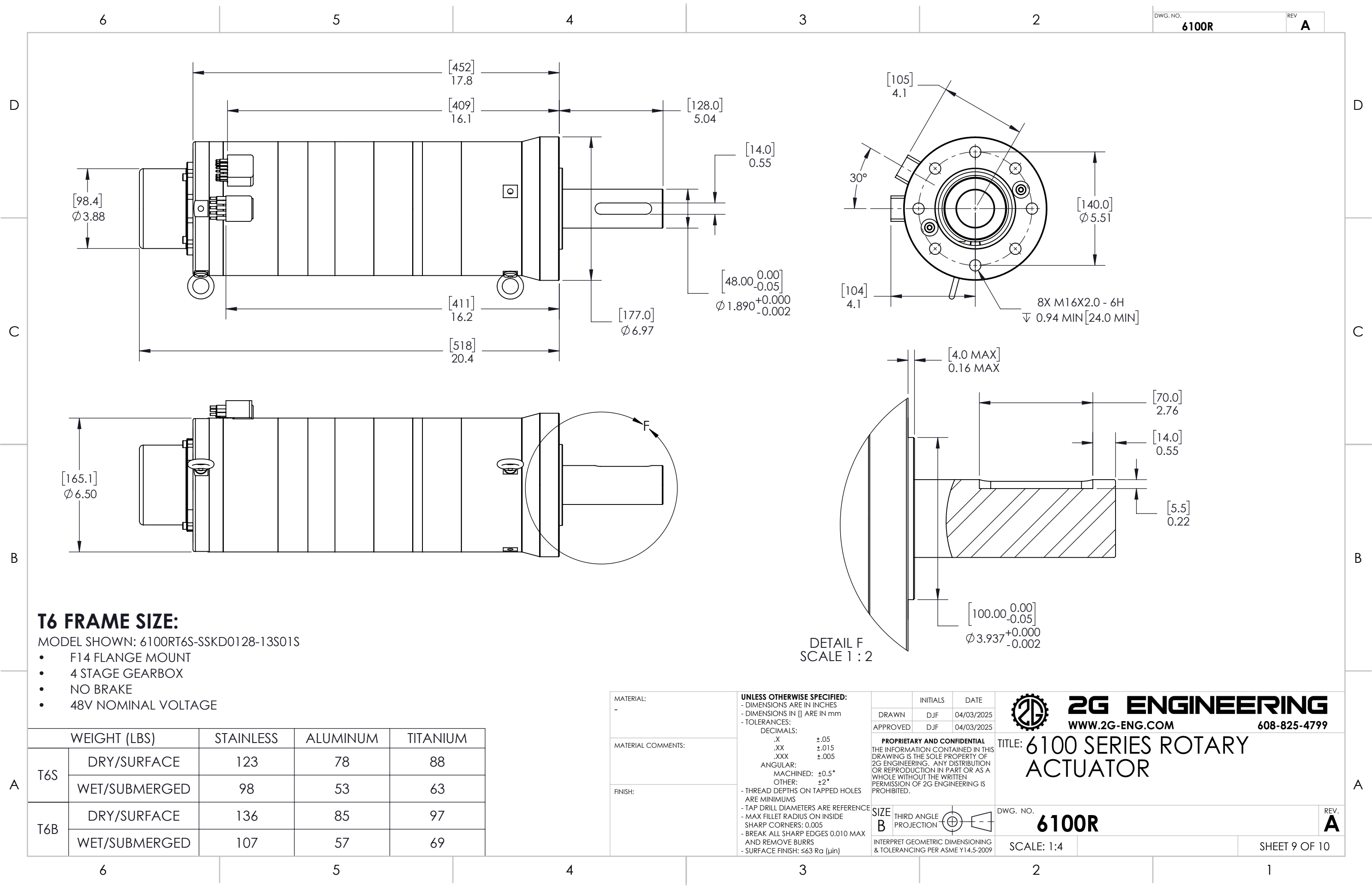
SCALE: 1:4

SHEET 8 OF 10

REV.
A

2G ENGINEERING
WWW.2G-ENG.COM
608-825-4799

TITLE: 6100 SERIES ROTARY ACTUATOR





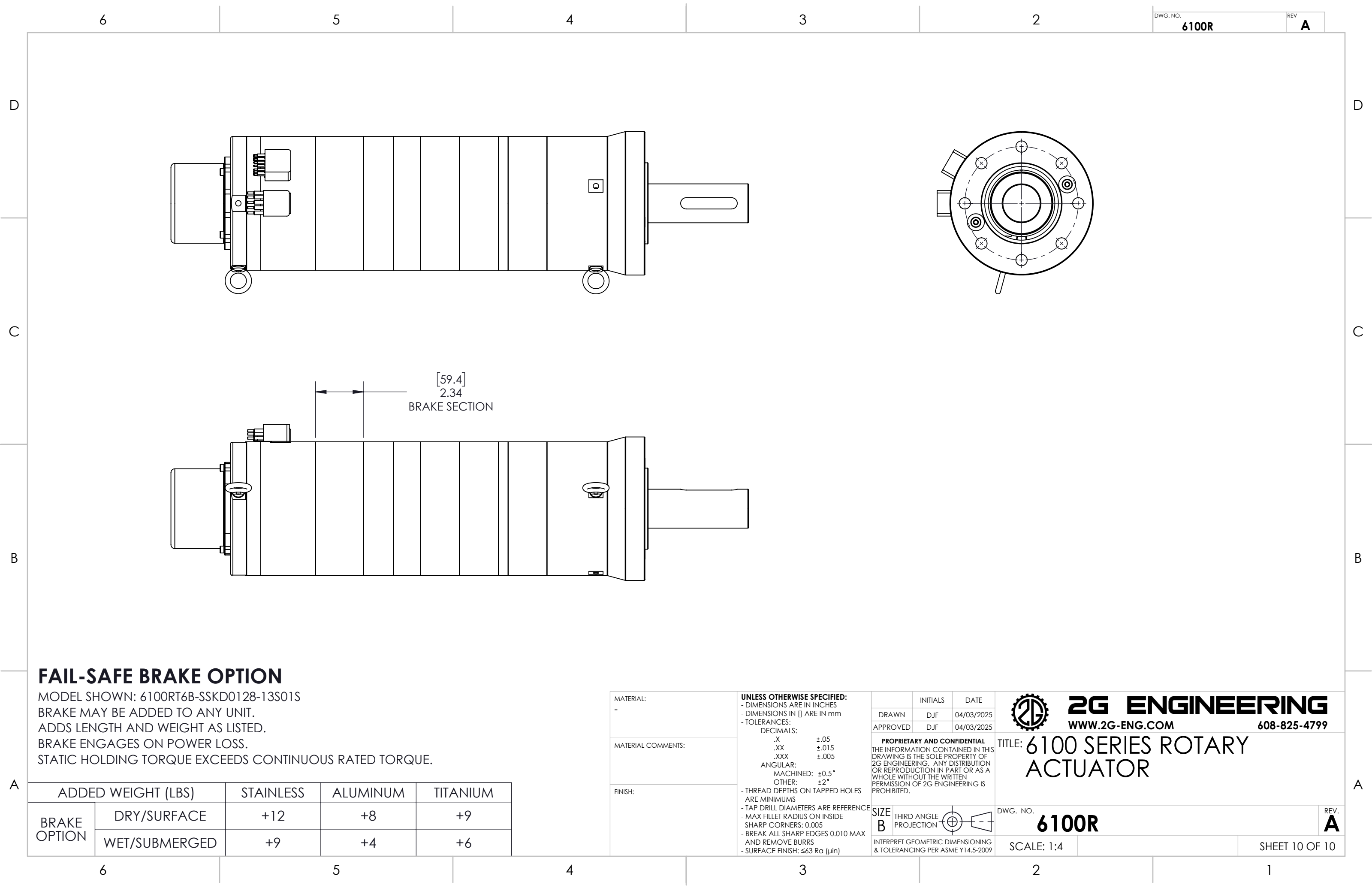
T6 FRAME SIZE:

MODEL SHOWN: 6100RT6S-SSKD0128-13S01S

- F14 FLANGE MOUNT
- 4 STAGE GEARBOX
- NO BRAKE
- 48V NOMINAL VOLTAGE

WEIGHT (LBS)		STAINLESS	ALUMINUM	TITANIUM
T6S	DRY/SURFACE	123	78	88
	WET/SUBMERGED	98	53	63
T6B	DRY/SURFACE	136	85	97
	WET/SUBMERGED	107	57	69

MATERIAL: -	UNLESS OTHERWISE SPECIFIED: - DIMENSIONS ARE IN INCHES - DIMENSIONS IN [] ARE IN mm - TOLERANCES: DECIMALS: .X ±.05 .XX ±.015 .XXX ±.005 ANGULAR: MACHINED: ±0.5° OTHER: ±2° - THREAD DEPTHS ON TAPPED HOLES ARE MINIMUMS - TAP DRILL DIAMETERS ARE REFERENCE - MAX FILLET RADIUS ON INSIDE SHARP CORNERS: 0.005 - BREAK ALL SHARP EDGES 0.010 MAX AND REMOVE BURRS - SURFACE FINISH: ≤63 Ra (µin)	INITIALS		DATE	 2G ENGINEERING WWW.2G-ENG.COM 608-825-4799	
MATERIAL COMMENTS:		DRAWN	DJF	04/03/2025		
		APPROVED	DJF	04/03/2025		
FINISH:		PROPRIETARY AND CONFIDENTIAL THE INFORMATION CONTAINED IN THIS DRAWING IS THE SOLE PROPERTY OF 2G ENGINEERING. ANY DISTRIBUTION OR REPRODUCTION IN PART OR AS A WHOLE WITHOUT THE WRITTEN PERMISSION OF 2G ENGINEERING IS PROHIBITED.				TITLE: 6100 SERIES ROTARY ACTUATOR
	SIZE B					
		INTERPRET GEOMETRIC DIMENSIONING & TOLERANCING PER ASME Y14.5-2009			DWG. NO. 6100R	REV. A
SCALE: 1:4				SHEET 9 OF 10		



FAIL-SAFE BRAKE OPTION

MODEL SHOWN: 6100RT6B-SSKD0128-13S01S
BRAKE MAY BE ADDED TO ANY UNIT.
ADDS LENGTH AND WEIGHT AS LISTED.
BRAKE ENGAGES ON POWER LOSS.
STATIC HOLDING TORQUE EXCEEDS CONTINUOUS RATED TORQUE.

ADDED WEIGHT (LBS)		STAINLESS	ALUMINUM	TITANIUM
BRAKE OPTION	DRY/SURFACE	+12	+8	+9
	WET/SUBMERGED	+9	+4	+6

MATERIAL:
-

MATERIAL COMMENTS:

FINISH:

UNLESS OTHERWISE SPECIFIED:
- DIMENSIONS ARE IN INCHES
- DIMENSIONS IN [] ARE IN mm
- TOLERANCES:
DECIMALS:
.X ±.05
.XX ±.015
.XXX ±.005
ANGULAR:
MACHINED: ±0.5°
OTHER: ±2°
- THREAD DEPTHS ON TAPPED HOLES ARE MINIMUMS
- TAP DRILL DIAMETERS ARE REFERENCE
- MAX FILLET RADIUS ON INSIDE SHARP CORNERS: 0.005
- BREAK ALL SHARP EDGES 0.010 MAX AND REMOVE BURRS
- SURFACE FINISH: ≤63 Ra (µin)

SIZE
B

THIRD ANGLE
PROJECTION

INITIALS
DJF

DATE
04/03/2025

APPROVED
DJF

04/03/2025

2G ENGINEERING
WWW.2G-ENG.COM
608-825-4799

TITLE: 6100 SERIES ROTARY
ACTUATOR

DWG. NO.
6100R

REV.
A

INTERPRET GEOMETRIC DIMENSIONING
& TOLERANCING PER ASME Y14.5-2009

SCALE: 1:4

SHEET 10 OF 10