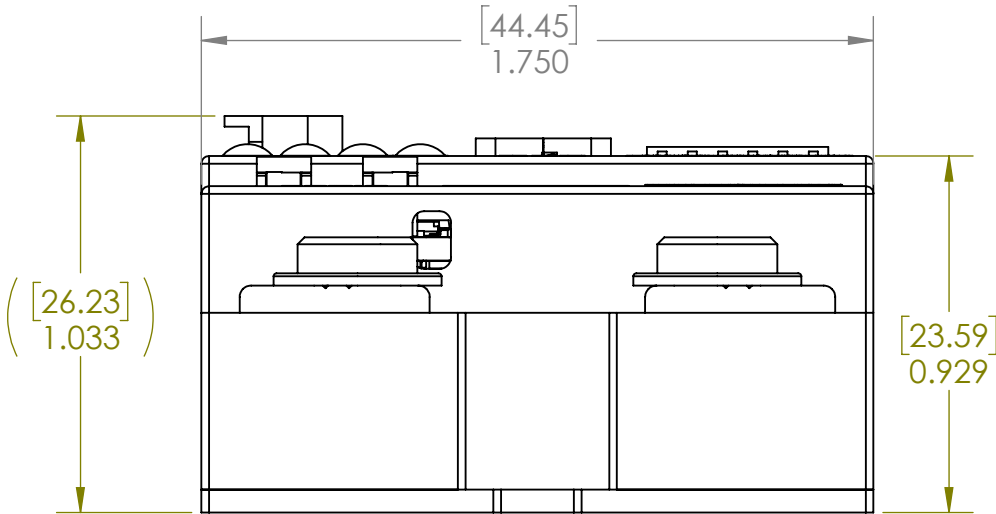
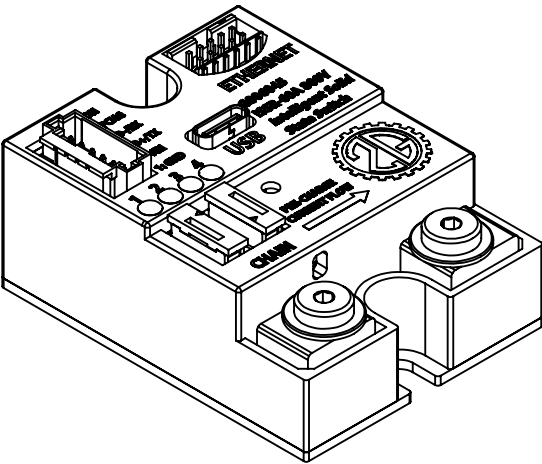



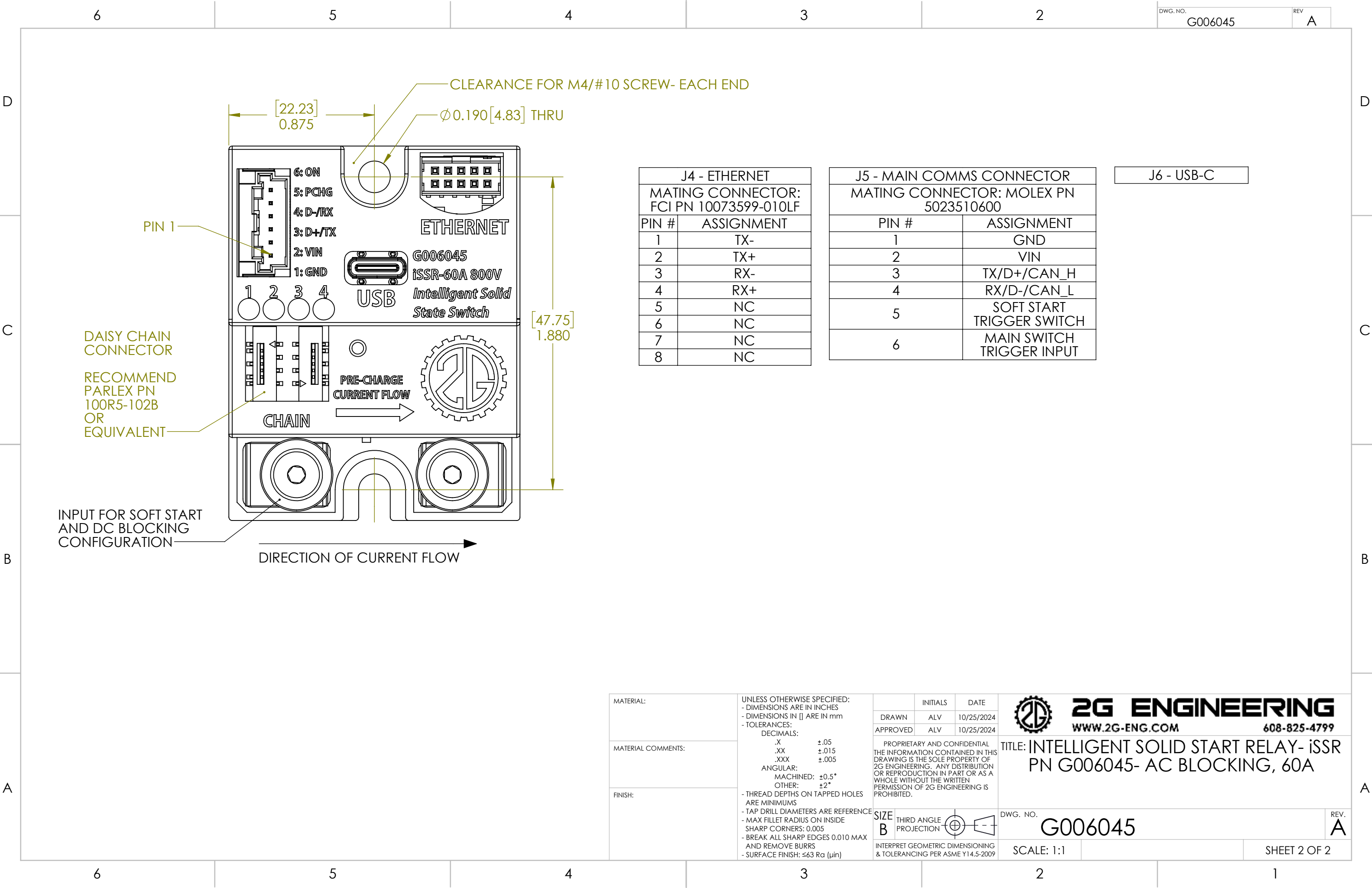
# INTELLIGENT SOLID STATE RELAY

- PBOF OPERATION
- 6000M DEPTH RATED
- BUILT-IN SOFT START
  - SWITCHABLE 50mA CONSTANT-CURRENT BYPASS CIRCUIT TO PRE-CHARGE LOAD CAPACITANCE
- INPUT-OUTPUT ISOLATION: 1000V MINIMUM
- SWITCHED VOLTAGE: 800V NOMINAL, 1000V PEAK
- UNIT TRIGGER/OPERATING VOLTAGE: 5-36V DC NOMINAL
- ETHERNET
- RS232
- RS485
- CAN BUS
- MULTIPLE UNITS CAN BE DAISY-CHAINED OFF OF A SINGLE POWER/CONTROL CONNECTION

SEE 2G DOCUMENT NUMBER 2240070 FOR FULL SPECIFICATIONS



MATERIAL:	UNLESS OTHERWISE SPECIFIED: - DIMENSIONS ARE IN INCHES - DIMENSIONS IN [ ] ARE IN mm - TOLERANCES: DECIMALS: .X ±.05 .XX ±.015 .XXX ±.005 ANGULAR: MACHINED: ±0.5° OTHER: ±2° - THREAD DEPTHS ON TAPPED HOLES ARE MINIMUMS - TAP DRILL DIAMETERS ARE REFERENCE - MAX FILLET RADIUS ON INSIDE SHARP CORNERS: 0.005 - BREAK ALL SHARP EDGES 0.010 MAX AND REMOVE BURRS - SURFACE FINISH: ≤63 Ra (µin)	INITIALS	DATE	 <b>2G ENGINEERING</b> WWW.2G-ENG.COM 608-825-4799	TITLE: INTELLIGENT SOLID STATE RELAY-ISSR PN G006045- AC BLOCKNG, 60A	
MATERIAL COMMENTS:		DRAWN	ALV			10/25/2024
FINISH:		APPROVED	ALV			10/25/2024
		PROPRIETARY AND CONFIDENTIAL THE INFORMATION CONTAINED IN THIS DRAWING IS THE SOLE PROPERTY OF 2G ENGINEERING. ANY DISTRIBUTION OR REPRODUCTION IN PART OR AS A WHOLE WITHOUT THE WRITTEN PERMISSION OF 2G ENGINEERING IS PROHIBITED.				
		SIZE B	THIRD ANGLE PROJECTION	DWG. NO. G006045	REV. A	
		INTERPRET GEOMETRIC DIMENSIONING & TOLERANCING PER ASME Y14.5-2009				
		SCALE: 2:1			SHEET 1 OF 2	



J4 - ETHERNET	
MATING CONNECTOR: FCI PN 10073599-010LF	
PIN #	ASSIGNMENT
1	TX-
2	TX+
3	RX-
4	RX+
5	NC
6	NC
7	NC
8	NC

J5 - MAIN COMMS CONNECTOR	
MATING CONNECTOR: MOLEX PN 5023510600	
PIN #	ASSIGNMENT
1	GND
2	VIN
3	TX/D+/CAN_H
4	RX/D-/CAN_L
5	SOFT START TRIGGER SWITCH
6	MAIN SWITCH TRIGGER INPUT

J6 - USB-C
------------

MATERIAL:

MATERIAL COMMENTS:

FINISH:

UNLESS OTHERWISE SPECIFIED:

- DIMENSIONS ARE IN INCHES
- DIMENSIONS IN [ ] ARE IN mm
- TOLERANCES:
  - DECIMALS:
    - .X ±.05
    - .XX ±.015
    - .XXX ±.005
  - ANGULAR:
    - MACHINED: ±0.5°
    - OTHER: ±2°
- THREAD DEPTHS ON TAPPED HOLES ARE MINIMUMS
- TAP DRILL DIAMETERS ARE REFERENCE
- MAX FILLET RADIUS ON INSIDE SHARP CORNERS: 0.005
- BREAK ALL SHARP EDGES 0.010 MAX AND REMOVE BURRS
- SURFACE FINISH: ≤63 Ra (µin)

INITIALS

DATE

DRAWN

ALV

10/25/2024

APPROVED

ALV

10/25/2024

PROPRIETARY AND CONFIDENTIAL


THE INFORMATION CONTAINED IN THIS DRAWING IS THE SOLE PROPERTY OF 2G ENGINEERING. ANY DISTRIBUTION OR REPRODUCTION IN PART OR AS A WHOLE WITHOUT THE WRITTEN PERMISSION OF 2G ENGINEERING IS PROHIBITED.

SIZE

B

THIRD ANGLE PROJECTION

INTERPRET GEOMETRIC DIMENSIONING & TOLERANCING PER ASME Y14.5-2009



**2G ENGINEERING**

WWW.2G-ENG.COM

608-825-4799

TITLE: INTELLIGENT SOLID START RELAY- iSSR

PN G006045- AC BLOCKING, 60A

DWG. NO.

G006045

REV.

A

SCALE: 1:1

SHEET 2 OF 2